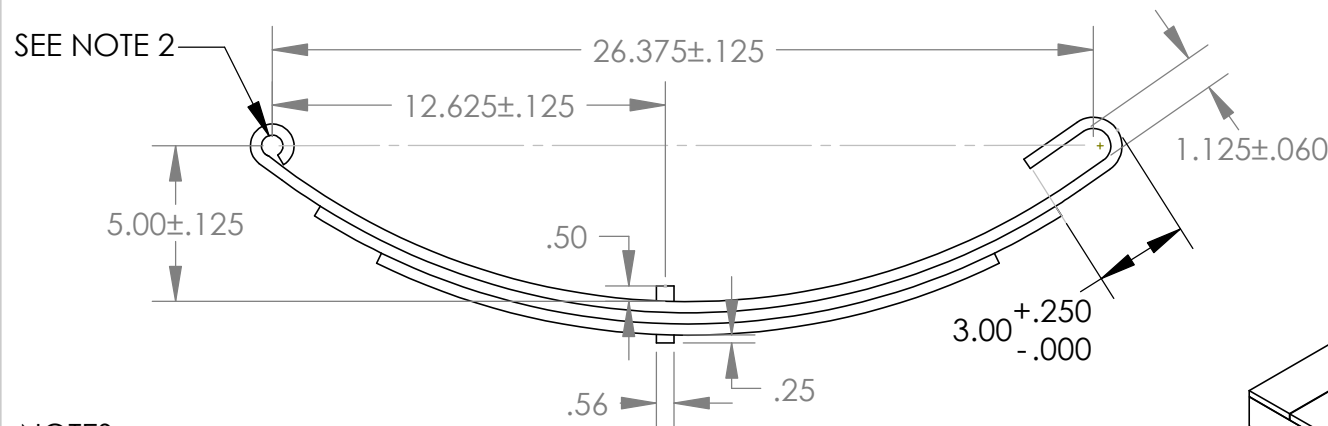
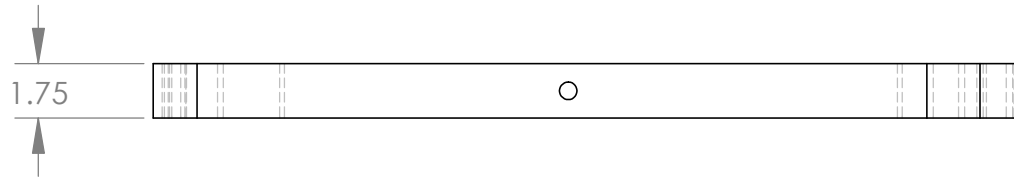
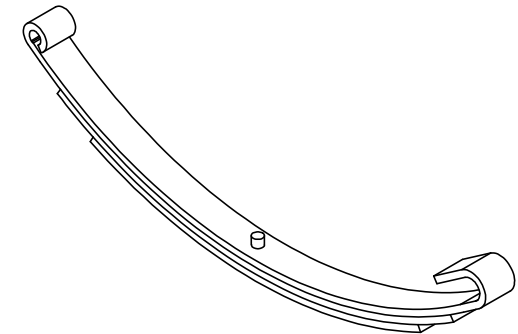
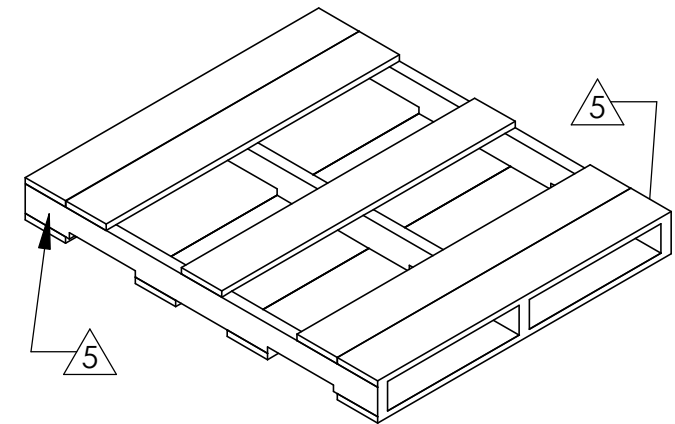


### LEAF INFORMATION

WIDTH	THICKNESS	POUND CAPACITY	MAX DEFLECTION @ 2800#
1.75"	.360"	1500#	2.25"



### MARK LOCATIONS FOR SHIPPING PALLET



#### NOTES:

- 1.) PICTORIAL IS GENERIC, STANDARD CONST. APPLIES
- 2.) MANUFACTURER NOTES:  
 \* MATERIAL: SAE 5160 STEEL  
 \* USE .688" X .563" X 1.75" NYLON BUSHING
- 3.) FINISH: ALUMINIZED COATING
- 4.) PARTS ARE RECEIVED FROM SUPPLIER ON A HEAT TREATED OR PLASTIC PALLET.

5) PALLET MUST BE COMPLIANT TO THE LATEST ISPM-15 (INTERNATIONAL STANDARDS FOR PHYTOSANITARY MEASURES) AND BEAR 'MARKING FOR APPROVED MEASURES' ON TWO VISABLE SURFACES, OPPISITE OF EACH OTHER.

ALL DIMENSIONS ARE IN INCHES UNLESS OTHERWISE STATED TOLERANCES EXCEPT AS NOTED

#### DECIMALS:

.X	±0.100
.XX	±0.060
.XXX	±0.030
.XXXX	±0.010

#### ANGLES:

±1°

ALL FORMED ANGLES EQUAL 90° UNLESS NOTED OTHERWISE

( ) INDICATES REFERENCE

THE INFORMATION IN THIS DRAWING IS THE SOLE PROPERTY OF KARAVAN TRAILERS, INC. ANY REPRODUCTION IN PART OR WHOLE WITHOUT THE WRITTEN PERMISSION OF KARAVAN TRAILERS, INC. IS PROHIBITED.

APPROVED BY:

DRAWN BY: TKA

DATE: 11-10-97

SHEET: 1 OF 1

SCALE: N/A



TITLE: SPRING, HOOK, 3-LEAF (W/ HEAT TREATED OR PLASTIC PALLET)

MAT'L: PURCHASED

FINISH: N/A

DWG. #: 219-00004

DWG. REV.	ECR/NDR NUMBER	REVISED BY	DATE	DESCRIPTION
F/3	13601	MJH	06-27-06	ADDED NOTES FOR ISPM-15 COMPLIANCE AND MARK LOCATION.
F/2	13601	MJH	05-22-06	ADDED NOTE 4: PARTS ARE RECEIVED FROM SUPPLIER ON A HEAT TREATED OR PLASTIC PALLET. ADDED (W/ HEAT TREATED OR PLASTIC PALLET) TO TITLE.