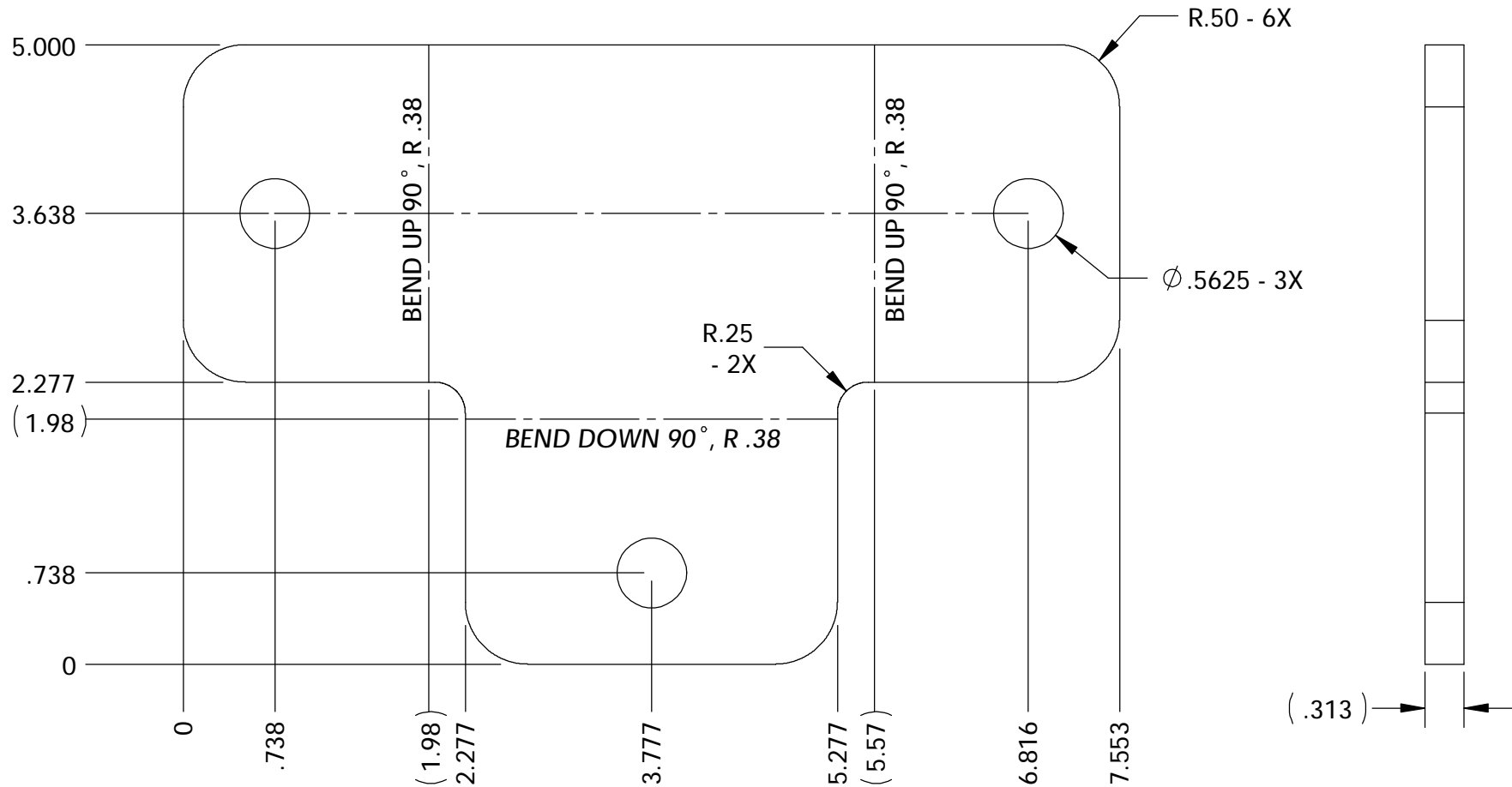


FLAT VIEW



NOTES:

- 1.) DIE # A-121
- 2.) FORM TOOL: DIE# PB 140
DIE# PB 204
- 3.) WHEN LASERED - 60" X 20 SHEET YIELDS 186 PCS

ALL DIMENSIONS ARE IN INCHES
UNLESS OTHERWISE STATED
TOLERANCES EXCEPT AS NOTED
DECIMALS:

.X ±0.100
.XX ±0.060
.XXX ±0.030
.XXXX ±0.010

ANGLES:
±1°

ALL FORMED ANGLES
EQUAL 90° UNLESS
NOTED OTHERWISE

() INDICATES REFERENCE

THE INFORMATION IN THIS DRAWING IS THE SOLE
PROPERTY OF KARAVAN TRAILERS, INC. ANY
REPRODUCTION IN PART OR WHOLE WITHOUT
THE WRITTEN PERMISSION OF KARAVAN TRAILERS,
INC. IS PROHIBITED.

APPROVED BY:

DRAWN BY:

JOEL NEHRING

DATE:

04-16-04

SHEET:

1 OF 1

SCALE:

N/A

KARAVAN

TITLE:

BUNK BRACKET

MAT'L:

.3125" HRPO SHEET

FINISH:

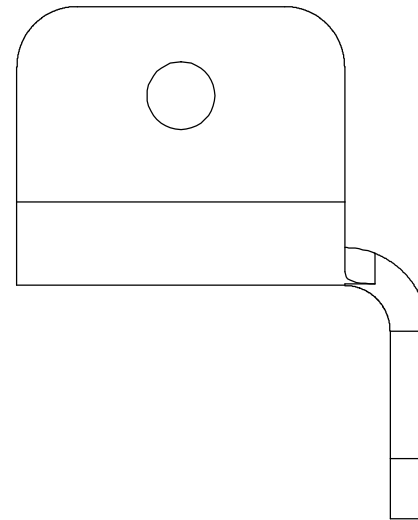
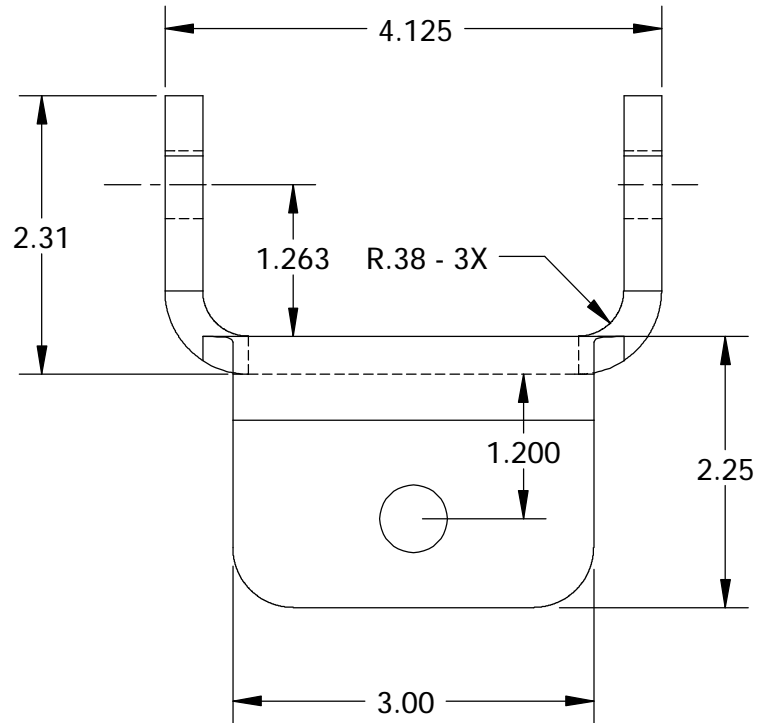
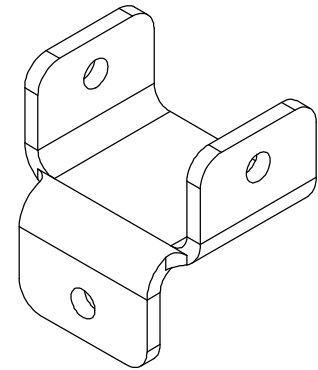
-ZN

DWG. #:

100-02059

DWG. REV.	ECR/NDR NUMBER	REVISED BY	DATE	DESCRIPTION
B	12922	TMM	10-18-04	FORMED VIEW: 2.31 WAS 2.25, 1.263 WAS 1.200, .38 RADIUS WAS .25. REMOVE 3.286 DIM FROM SIDE VIEW. UPDATE FLAT VIEW.
A	12705	JRN	04-16-04	DRAWING CREATED

FORMED VIEWS



ALL DIMENSIONS ARE IN INCHES
UNLESS OTHERWISE STATED
TOLERANCES EXCEPT AS NOTED
DECIMALS:

.X	±0.100
.XX	±0.060
.XXX	±0.030
.XXXX	±0.010

ANGLES:
±1°
ALL FORMED ANGLES
EQUAL 90° UNLESS
NOTED OTHERWISE
() INDICATES REFERENCE

THE INFORMATION IN THIS DRAWING IS THE SOLE
PROPERTY OF KARAVAN TRAILERS, INC. ANY
REPRODUCTION IN PART OR WHOLE WITHOUT
THE WRITTEN PERMISSION OF KARAVAN TRAILERS,
INC. IS PROHIBITED.

APPROVED BY:

DRAWN BY:
JOEL NEHRING

DATE:
04-16-04

SHEET:
2 OF 2

SCALE:
N/A

KARAVAN

TITLE:
BUNK BRACKET

MAT'L:
.3125" HRPO SHEET

FINISH:
-ZN

DWG. #:
100-02059

DWG. REV.	ECR/NDR NUMBER	REVISED BY	DATE	DESCRIPTION
B	12922	TMM	10-18-04	FORMED VIEW: 2.31 WAS 2.25, 1.263 WAS 1.200, .38 RADIUS WAS .25. REMOVE 3.286 DIM FROM SIDE VIEW. UPDATE FLAT VIEW.
A	12705	JRN	04-16-04	DRAWING CREATED

First Piece - In Process Inspection Sheet

Vendor _____

Description: **BUNK BRACKET**

Part # **100-02059**

Rev. **B**

QA Approval: S. mudra

JOB# _____

Characteristic	Tol.	Method	Freq.	1st Piece	A/R	2	A/R	3	A/R	4	A/R	5	A/R	6	A/R	7	A/R	Inspected By/Date:	
LASER																			
.3125"	.303 - .321	Mic.	1 per bundle																1 /
H.R.P.O.	NA	Visual	1 per bundle																2 /
7.553	± .030	Caliper	1st Piece																3 /
5.000	± .030	Caliper	1st Piece																4 /
Ø.5625 - 3X	± .010	Caliper	1st Piece																5 /
FORM																			
4.125	± .030	Caliper	1:100																6 /
1.200	± .030	Caliper	1:100																7 /
2.25	± .060	Caliper	1:100																
3.00	± .060	Caliper	1:100																
2.31	± .060	Caliper	1:100																
1.263	± .030	Caliper	1:100																
R.38 - 3X	NA	Radius Gage	1st pc.																
Inspect parts for scratches, dents, gouges, etc.	NA	Visual	Every piece																
No slugs left in lasered holes.	NA	Visual	Every piece																